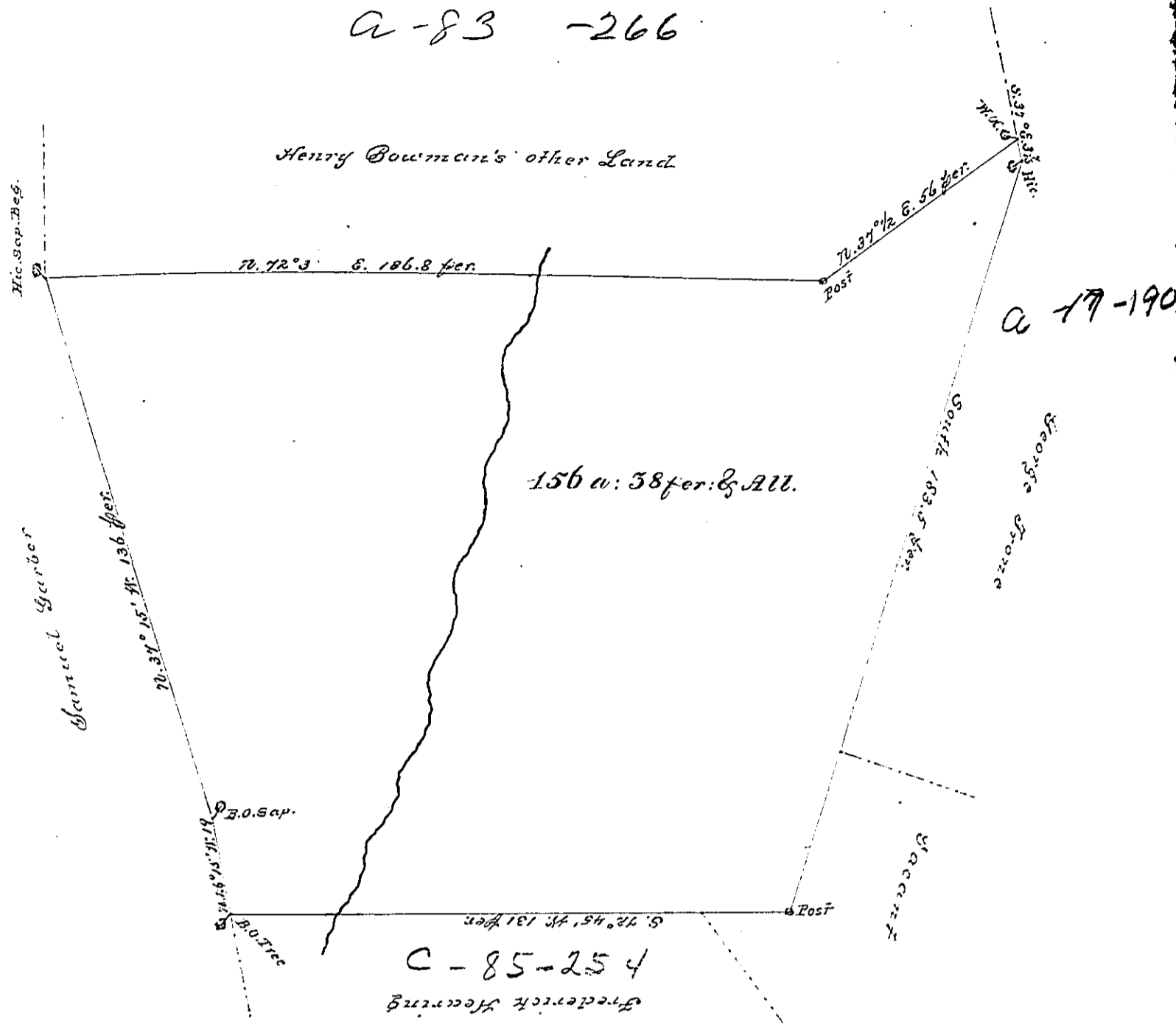


a-83 -266



A Draught of a Tract of Land situated in Manheim Township in the County of York containing One Hundred and Fifty six acres and Thirty Eight perches and the usual allowance. Surveyed to Henry Bowman the 17<sup>th</sup> Day of August 1765, In Pursuance of Two Warrants the one for 50<sup>00</sup> bearing Date the 10<sup>th</sup> Day of Sept: 1750 & the other for 100<sup>00</sup>. Dated the 31<sup>st</sup> Day of May 1762.

By Wm. M. Chew Esq.

To John Lukens Esq. }  
Surveyor General }

IN TESTIMONY that the above is a copy of the original remaining on file in the Department of Internal Affairs of Pennsylvania, made conformably to an Act of Assembly approved the 16th day of February, 1833, I have hereunto set my Hand and caused the Seal of said Department to be affixed at Harrisburg, this

Ninth day of April 1891  
 Geo. J. Stewart  
 Secretary of Internal Affairs